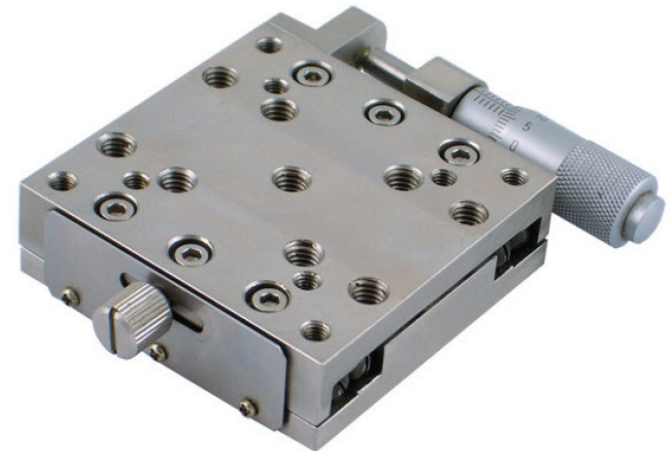


## CSTM-TM104-13H-31 - Data Sheet

### Single Axis Precision Linear Stage

Feature	Value
Body	
Ext. Dimensions [mm]	Height: 18 Width: 72.8 Length: 88.6
Platform	60mm x 60mm
Weight	0.5kg
Material	Stainless Steel
Clamping Holes	M4/M6
Translation	
Adjustment	Micrometer head, 0.5mm/Rev 0.01mm scale
Full range	13mm Single Axis
Travel guide	Crossed Roller Bearing
Fix	Side lock screw
Load Capacity	
Max Horizontal Load	2kg
Max Vertical Load	10kg



For more information please enter [www.oemix.com](http://www.oemix.com)

