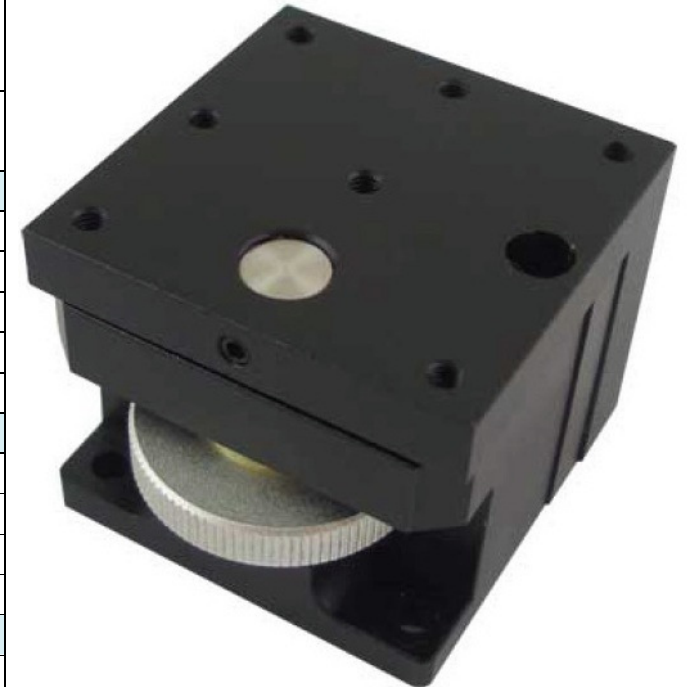


CSTM-VM200-5-58 - Data Sheet

Lab Jack

Feature	Value
Body	
Ext. Dimensions [mm]	Height: 39 Width: 40 Length: 44
Platform	40mm x 40mm
Weight	0.26kg
Material	Aluminum (Black Anodize Finish)
Clamping holes	M3
Translation	
Adjustment	Coarse adjustment screw
Full range	5mm vertical axis
Travel guide	Slide guide
Fix	Lock screw
Load Capacity	
Max Horizontal Load	Not designed for loading
Max Vertical Load	1kg



For more information please enter www.oemix.com

